

LINEA
LINE  **RAM**
BLOCK

CASSE METALLICHE METAL BOXES

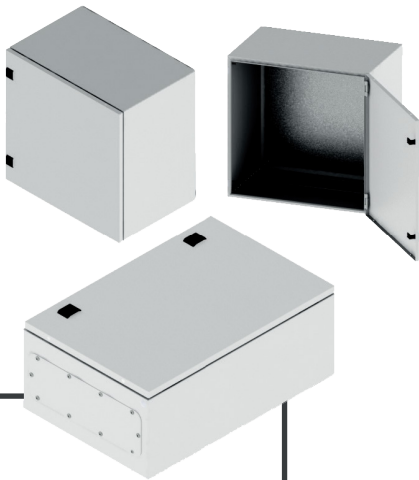
SERIE CE E CDE
CE AND CDE SERIES



 **DKC**
NEXT TO YOU

CASSE SERIE CE
CE BOXES SERIES

CE

**Struttura**

Lamiera d'acciaio sp. 15/10 verniciata
RAL 7035 bucciato

Pannello di cablaggio

Lamiera d'acciaio sp. 20/10 zincato

Porta

Reversibile, con una chiusura (due chiusure
oltre altezza 500) verniciata
Lamiera d'acciaio sp. 15-20/10 RAL 7035
bucciato con guarnizione in colata continua

**Grado di resistenza all'urto secondo
IEC EN 62208; EN 62262:**

- anta cieca IK10
- anta vetro IK09

Grado di protezione

- **IP66** (Type 4 - UL508A) anta unica cieca
in accordo con IEC EN 62208; EN 60529
- **IP55** (Type 12 - UL508A) doppia anta in
accordo con IEC EN 62208; EN 60529

Piastra d'ingresso cavi

Posta sul fondo della cassa adeguatamente
dimensionata

Composizione

Struttura, pannello di cablaggio, porta,
piastra di ingresso cavi, confezione di viteria

Structure

15/10 thick steel sheet, painted textured RAL
7035

Mounting panel

20/10 thick galvanized steel

Door

Reversible, with one locking element (two
locking elements for height over 500 mm),
painted textured RAL 7035, provided with a
gasket applied in continuous casting

**Impact resistance degree as per
IEC EN 62208; EN 62262:**

- single door IK10
- glass door IK09

Protection degree

- **IP66** (Type 4 - UL508A) single door in
accordance with IEC EN 62208; EN 60529
- **IP55** (Type 12 - UL508A) double door in
accordance with IEC EN 62208; EN 60529

Cable gland plate

Appropriately dimensioned and located on
the box bottom

Composition

Structure, mounting panel, door, cable gland
plate, set of fasteners

CASSE DI DERIVAZIONE SERIE CDE
CDE JUNCTION BOXES SERIES

CDE

Struttura

Lamiera d'acciaio sp. 15/10 verniciata
RAL 7035 bucciato

Porta o coperchio incernierato

Lamiera d'acciaio sp. 15/10 verniciata RAL
7035 bucciato con guarnizione in colata
continua

Composizione

Struttura, porta o coperchio, confezione
di viteria

**Grado di resistenza meccanica
secondo IEC EN 62208; EN 62262
IK10****Grado di protezione**

- cassa senza flange **IP66**
(Type 4 - UL508A) in accordo con
IEC EN 62208; EN 60529
- cassa con flange **IP55**
(Type 12 - UL508A) in accordo con
IEC EN 62208; EN 60529
- cassa con porta incernierata **IP55**
(Type 12 - UL508A) in accordo con
IEC EN 62208; EN 60529

Structure

10/10 thick steel sheet, painted textured
RAL 7035

Hinged door or cover

Painted textured RAL 7035, provided with
a gasket applied in continuous casting

Composition

Structure, door or cover, set of
accessories and screws for assembly

**Mechanical resistance degree as per
IEC EN 62208; EN 62262
IK10****Protection degree**

- box **IP66**
(Type 4 - UL508A) in accordance with
IEC EN 62208; EN 60529
- box with flanges **IP55**
(Type 12 - UL508A) in accordance with
IEC EN 62208; EN 60529
- box with hinged door **IP55**
(Type 12 - UL508A) in accordance with
IEC EN 62208; EN 60529



CHIUSURA BOX BOX LOCK

DESCRIZIONE DESCRIPTION	CHIAVE IN PLASTICA PLASTIC KEY	CODICE CODE
 Completa di inserto tipo aletta doppio pettine Ø 3 mm Complete with double-bit lock insert Ø 3 mm	RPCE240	RPCE205


DESCRIZIONE DESCRIPTION	CHIAVE IN PLASTICA PLASTIC KEY	INSERTO INSERT
 Aletta doppio pettine Ø 3 mm Double-bit lock insert Ø 3 mm	RPCE240	RZCE261**
 Triangolo 8 mm Triangle 8 mm	RPCE246	RZCE224**
 Triangolo 7 mm Triangle 7 mm	RPCE245	RZCE223**
 Tipo "FIAT" "FIAT" Type	RZCE237*	RZCE226**
 Quadro 7 mm Square 7 mm	RPCE243	RZCE221**
 Chiusura completa (con chiavi cifrate uguali) Complete lock (with equal keys)	RZCE227*	
Chiusura completa (con chiavi cifrate diverse) Complete lock (with equal keys)	RZCE228*	

* chiave in metallo inclusa
* metal key included

** Inserto da montare in sostituzione agli inserti standard (doppio pettine Ø 3 mm)
** Insert to be mounted instead of standard inserts (double-bit Ø 3 mm)



CHIUSURA A CARIGLIONE RATCHET LOCK

DESCRIZIONE DESCRIPTION	CHIAVE IN METALLO METAL KEY	CODICE CODE
 Completa di inserto tipo aletta doppio pettine Ø 3 mm Complete with double-bit lock insert Ø 3 mm	RZCE230	RZCE200

DESCRIZIONE DESCRIPTION	CHIAVE IN METALLO METAL KEY	INSERTO INSERT
 Aletta doppio pettine Ø 3 mm Double-bit lock insert Ø 3 mm	RZCE230	RZCE219**
 Triangolo 8 mm Triangle 8 mm	RZCE236	RZCE214**
 Triangolo 7 mm Triangle 7 mm	RZCE235	RZCE213**
 Quadro 8 mm Square 8 mm	RZCE234	RZCE212**
 Quadro 7 mm Square 7 mm	RZCE233	RZCE211**

** Inserto da montare in sostituzione agli inserti standard (doppio pettine Ø 3 mm)
** Insert to be mounted instead of standard inserts (double-bit Ø 3 mm)

MANIGLIE PER CHIUSURA A CARIGLIONE HANDLES FOR RATCHET LOCK

DESCRIZIONE DESCRIPTION	CODICE CODE	CHIAVE KEY
Maniglia girevole inserto aletta doppio pettine 3 mm Swing handle with double-bit lock insert 3 mm	RPCE207	RZCE230

DESCRIZIONE DESCRIPTION	CODICE CODE	CHIAVE KEY
Maniglia girevole inserto a chiave cifrata Swing handle with encrypted key insert	RPCE201	Inclusa Included



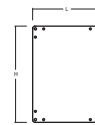
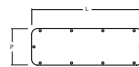
RPCE207



RPCE201

CASSE SERIE CE
CE BOXES SERIES

CE



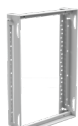
DIMENSIONI UTILI
USEFUL DIMENSIONS

H	DIMENSIONI (IN ORDINE DI PROFONDITÀ) DIMENSIONS (DEPTH ORDER)		CHIUSURE LOCKS N°	ANTE DOORS N°	CASSA PORTA CIECA BLANK DOOR BOX	CASSA PORTA TRASPARENTE TRANSPARENT DOOR BOX	PASSAGGIO CAVI* CABLE PASSAGE *		PANNELLO DI CABLAGGIO* WIRING PANEL*	
	L	P					L	P	H	L
300	250	150	Box, 1	1	R5CE0391	-	178	48	250	200
	300	150	Box, 1	1	R5CE0331	-	228	48	250	250
	400	150	Box, 1	1	R5CE0341	-	328	48	250	350
400	300	150	Box, 1	1	R5CE0431	R5CEX0431	228	48	350	250
500	300	150	Box, 2	1	R5CE0531	-	228	48	450	250
400	300	200	Box, 1	1	R5CE0432	R5CEX0432	228	48	350	250
	400	200	Box, 1	1	R5CE0442	R5CEX0442	328	98	350	350
	600	200	Box, 1	1	R5CE0462	R5CEX0462	528	98	350	550
500	300	200	Box, 2	1	R5CE0532	R5CEX0532	228	48	450	250
	400	200	Box, 2	1	R5CE0542	R5CEX0542	328	98	450	350
	500	200	Box, 2	1	R5CE0552	R5CEX0552	428	98	450	450
600	400	200	Box, 2	1	R5CE0642	R5CEX0642	328	98	550	350
700	500	200	Box, 2	1	R5CE0752	R5CEX0752	428	98	650	450
800	1000	200	Box, 2	2	R5CE0812	-	328x2	98	750	950
600	400	250	Box, 2	1	R5CE0549	R5CEX0549	328	98	450	350
	400	250	Box, 2	1	R5CE0649	R5CEX0649	328	98	550	350
	600	250	Box, 2	1	R5CE0669	R5CEX0669	528	98	550	550
700	500	250	Box, 2	1	R5CE0759	R5CEX0759	428	98	650	450
800	600	250	Box, 2	1	R5CE0869	R5CEX0869	528	98	750	550
1000	600	250	Box, 2	1	R5CE1069	R5CEX1069	528	98	950	550
600	800	300	Box, 2	2	R5CE0683	-	728	198	550	750
	1000	300	Box, 2	2	R5CE0613	-	328x2	198	550	950
	1200	300	Box, 2	2	R5CE06123	-	528x2	198	550	1150
800	600	300	Box, 2	1	R5CE0863	R5CEX0863	528	198	750	550
	800	300	Box, 2	1	R5CE0883	-	728	198	750	750
	1000	300	Box, 2	2	R5CE0813	-	328x2	198	750	950
	1200	300	Box, 2	2	R5CE08123	-	528x2	198	750	1150
1000	600	300	Box, 2	1	R5CE1063	R5CEX1063	528	198	950	550
	800	300	Box, 2	1	R5CE1083	R5CEX1083	728	198	950	750
	1000	300	Cariglione, 1	2	R5CE1013	-	328x2	198	950	950
1200	600	300	Box, 2	1	R5CE1263	R5CEX1263	528	198	1150	550
	800	300	Box, 2	1	R5CE1283	R5CEX1283	728	198	1150	750
	1000	300	Cariglione, 1	2	R5CE1213	-	328x2	198	1150	950
	1200	300	Cariglione, 1	2	R5CE12123	-	528x2	198	1150	1150
1400	600	300	Cariglione, 1	1	R5CE1463	-	528	198	1350	550
	800	300	Cariglione, 1	1	R5CE1483	-	728	198	1350	750
	1000	300	Cariglione, 1	2	R5CE1413	-	328x2	198	1350	950
600	400	400	Box, 2	1	R5CE0644	-	328	198	550	350
	600	400	Box, 2	1	R5CE0664	R5CEX0664	528	198	550	550
800	600	400	Box, 2	1	R5CE0864	R5CEX0864	528	198	750	550
	800	400	Box, 2	1	R5CE0884	-	728	198	750	750
1000	600	400	Box, 2	1	R5CE1064	-	528	198	950	550
	800	400	Box, 2	1	R5CE1084	R5CEX1084	728	198	950	750
1200	600	400	Box, 2	1	R5CE1264	R5CEX1264	528	198	1150	550
	800	400	Box, 2	1	R5CE1284	-	728	198	1150	750

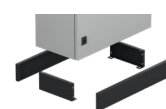
*INCLUSO
*INCLUDED

ACCESSORI PER CASSE CE
ACCESSORIES FOR CE BOXES SERIES

DIMENSIONI
(IN ORDINE DI PROFONDITÀ)
DIMENSIONS
(DEPTH ORDER)



**PANNELLO AVVITATO
CON GUIDA DIN
*ZERO FINALE**
PORTELLA CIECA
DISTRIBUTION PANEL
DIN MODULE
*LAST NUMBER ZERO
BLANK DOOR



ZOCCOLO
PLINTH

H	L	P	PORTA INTERNA INTERNAL DOOR	TELAIO MODULARE MODULAR FRAME	TELAIO MOD. SENZA PORTELLE NEUTRAL MODULAR FRAME	PANNELLO AVVITATO CON GUIDA DIN *ZERO FINALE PORTELLA CIECA DISTRIBUTION PANEL DIN MODULE *LAST NUMBER ZERO BLANK DOOR	MODULI MODULES	TETTO PROTEZIONE PROTECTIVE CANOPY	GUIDE RINFORZO PORTA REINFORCEMENT RAILS FOR DOORS	FRONTALE FRONT	LATERALE SIDE
300	250	150	-	-	-	-	-	R5TT091	-	-	-
	300	150	-	-	-	-	-	R5TT031	-	-	-
	400	150	-	-	-	-	-	R5TT041	-	-	-
400	300	150	R5IE43	R5TMC43	-	-	10 x2	R5TT031	RZS40	-	-
500	300	150	R5IE53	R5TMC53	-	-	10 x3	R5TT031	RZS50	-	-
400	300	200	R5IE43	R5TMC43	-	-	10 x2	R5TT032	RZS40	-	-
	400	200	R5IE44	R5TMC44	-	-	16 x2	R5TT042	RZS40	-	-
	600	200	R5IE46	-	-	-	-	R5TT062	RZS40	-	-
500	300	200	R5IE53	R5TMC53	-	-	10 x3	R5TT032	RZS50	-	-
	400	200	R5IE54	R5TMC54	-	-	16 x3	R5TT042	RZS50	-	-
	500	200	R5IE55	R5TMC55	-	-	21 x3	R5TT052	RZS50	-	-
600	400	200	R5IE64	R5TMC64	-	-	16 x4	R5TT042	RZS60	-	-
700	500	200	R5IE75	-	R5TMN75	R5PFC5151* (x4)	21 x4	R5TT052	RZS70	-	-
800	1000	200	-	-	-	-	-	R5TT102	RZS80	-	-
600	400	250	R5IE54	R5TMC54	-	-	16 x3	R5TT049	RZS50	-	-
	400	250	R5IE64	R5TMC64	-	-	16 x4	R5TT049	RZS60	-	-
	600	250	R5IE66	-	R5TMN66	R5PFC61181* (x3)	26 x3	R5TT069	RZS60	-	-
700	500	250	R5IE75	-	R5TMN75	R5PFC5151* (x4)	21 x4	R5TT059	RZS70	-	-
800	600	250	R5IE86	-	R5TMN86	R5PFC6181* (x4)	26 x4	R5TT069	RZS80	-	-
1000	600	250	R5IE16	-	R5TMN106	R5PFC6181* (x5)	26 x5	R5TT069	RZS100	-	-
600	800	300	-	-	-	-	-	R5TT083	RZS60	R1FZCE8	R1LZCE3
	1000	300	-	-	-	-	-	R5TT103	RZS60	R1FZCE10	R1LZCE3
	1200	300	-	-	-	-	-	R5TT123	RZS60	R1FZCE12	R1LZCE3
800	600	300	R5IE86	-	R5TMN86	R5PFC6181* (x4)	26 x4	R5TT063	RZS80	R1FZCE6	R1LZCE3
	800	300	R5IE88	-	-	-	-	R5TT083	RZS80	R1FZCE8	R1LZCE3
	1000	300	-	-	-	-	-	R5TT103	RZS80	R1FZCE10	R1LZCE3
	1200	300	-	-	-	-	-	R5TT123	RZS80	R1FZCE12	R1LZCE3
1000	600	300	R5IE16	-	R5TMN106	R5PFC6181* (x5)	26 x5	R5TT063	RZS100	R1FZCE6	R1LZCE3
	800	300	R5IE18	-	R5TMN108	R5PFC8181* (x5)	36 x5	R5TT083	RZS100	R1FZCE8	R1LZCE3
	1000	300	-	-	-	-	-	R5TT103	RZS100	R1FZCE10	R1LZCE3
1200	600	300	R5IE26	-	R5TMN126	R5PFC6181* (x6)	26 x6	R5TT063	RZS120	R1FZCE6	R1LZCE3
	800	300	R5IE28	-	R5TMN128	R5PFC8181* (x6)	36 x6	R5TT083	RZS120	R1FZCE8	R1LZCE3
	1000	300	-	-	-	-	-	R5TT103	RZS120	R1FZCE10	R1LZCE3
	1200	300	-	-	-	-	-	R5TT123	RZS120	R1FZCE12	R1LZCE3
1400	600	300	-	-	-	-	-	R5TT063	RZS140	R1FZCE6	R1LZCE3
	800	300	-	-	-	-	-	R5TT083	RZS140	R1FZCE8	R1LZCE3
	1000	300	-	-	-	-	-	R5TT103	RZS140	R1FZCE10	R1LZCE3
600	400	400	R5IE64	R5TMC64	-	-	16 x4	R5TT044	RZS60	-	-
	600	400	R5IE66	-	R5TMN66	R5PFC6181* (x3)	26 x3	R5TT064	RZS60	R1FZCE6	R1LZCE4
800	600	400	R5IE86	-	R5TMN86	R5PFC6181* (x4)	26 x4	R5TT064	RZS80	R1FZCE6	R1LZCE4
	800	400	R5IE88	-	-	-	-	R5TT084	RZS80	R1FZCE8	R1LZCE4
1000	600	400	R5IE16	-	R5TMN106	R5PFC6181* (x5)	26 x5	R5TT064	RZS100	R1FZCE6	R1LZCE4
	800	400	R5IE18	-	R5TMN108	R5PFC8181* (x5)	36 x5	R5TT084	RZS100	R1FZCE8	R1LZCE4
1200	600	400	R5IE26	-	R5TMN126	R5PFC6181* (x6)	26 x6	R5TT064	RZS120	R1FZCE6	R1LZCE4
	800	400	R5IE28	-	R5TMN128	R5PFC8181* (x6)	36 x6	R5TT084	RZS120	R1FZCE8	R1LZCE4



**STAFFA FISSAGGIO
PARETE CARICO**
WALL MOUNTING
BRACKET
MAX. 4x100 KG

**BLOCCO PORTA
A 90°**
DOOR STOP AT 90°

**PORTA PIENA
RICAMBI**
BLANK DOOR
REPLACEMENTS

**PORTA VETRO
RICAMBI**
GLASS DOOR
REPLACEMENTS

**PANNELLO DI
CABLAGGIO RICAMBI**
WIRING PANEL
REPLACEMENTS

**FONDELLO PASSAGGIO
CAVI RICAMBI**
CABLE PASSAGE
BOTTOM
REPLACEMENTS

**DIMENSIONI
(IN ORDINE
DI PROFONDITÀ)
DIMENSIONS
(DEPTH ORDER)**

**CHIUSURE
A VITE
SCREW
CLOSURE**

						H	L	P	N°		
RZA62	RZA31	R5PE39	-	RZPCE39	R5FLCE5	150	150	80	4		
RZA62	RZA31	R5PE33	-	RZPCE33	R5FLCE2	180	150	80	4		
RZA62	RZA31	R5PE34	-	RZPCE43	R5FLCE6	200	180	80	4		
RZA62	RZA31	R5PE43	R5PXE43	RZPCE43	R5FLCE2		200	80	4		
RZA62	RZA31	R5PE53	-	RZPCE53	R5FLCE2	300	150	80	4		
RZA62	RZA31	R5PE43	R5PXE43	RZPCE43	R5FLCE2		200	80	4		
RZA62	RZA31	R5PE44	R5PXE44	RZPCE44	R5FLCE3	400	200	80	4		
RZA62	RZA31	R5PE46	R5PXE46	RZPCE64	R5FLCE4	600	200	80	6		
RZA62	RZA31	R5PE53	R5PXE53	RZPCE53	R5FLCE2	800	200	80	6		
RZA62	RZA31	R5PE54	R5PXE54	RZPCE54	R5FLCE3	150	150	120	4		
RZA62	RZA31	R5PE55	R5PXE55	RZPCE55	R5FLCE7	200	200	120	4		
RZA62	RZA31	R5PE64	R5PXE64	RZPCE64	R5FLCE3	300	150	120	4		
RZA62	RZA31	R5PE75	R5PXE75	RZPCE75	R5FLCE7		200	120	4		
RZA62	RZA31	R5PE810	-	RZPCE81	R5FLCE3 (x2)		300	120	4		
RZA62	RZA31	R5PE54	R5PXE54	RZPCE54	R5FLCE3	400	200	120	4		
RZA62	RZA31	R5PE64	R5PXE64	RZPCE64	R5FLCE3		300	120	4		
RZA62	RZA31	R5PE66	R5PXE66	RZPCE66	R5FLCE4		400	120	4		
RZA62	RZA31	R5PE75	R5PXE75	RZPCE75	R5FLCE7	500	200	120	6		
RZA62	RZA31	R5PE86	R5PXE86	RZPCE86	R5FLCE4		300	120	6		
RZA62	RZA31	R5PE106	R5PXE106	R5PXE106	R5FLCE4	600	200	120	6		
RZA62	RZA31	R5PE68	-	RZPCE86	R5FLCE10		300	120	6		
RZA62	RZA31	R5PE610	-	RZPCE16	R5FLCE8 (x2)	800	400	120	6		
RZA62	RZA31	R5PE612	-	RZPCE26	R5FLCE9 (x2)		200	120	6		
RZA62	RZA31	R5PE86	R5PXE86	RZPCE86	R5FLCE9	400	120	6			
RZA62	RZA31	R5PE88	-	RZPCE88	R5FLCE10	RZA62	RZA31	R5PE810	-	RZPCE81	R5FLCE8 (x2)
RZA62	RZA31	R5PE810	-	RZPCE81	R5FLCE8 (x2)						
RZA62	RZA31	R5PE812	-	RZPCE28	R5FLCE9 (x2)						
RZA62	RZA31	R5PE106	R5PXE106	RZPCE16	R5FLCE9						
RZA62	RZA31	R5PE108	R5PXE108	RZPCE18	R5FLCE10						
RZA62	RZA31	R5PE1010	-	RZPCE110	R5FLCE8 (x2)						
RZA62	RZA31	R5PE126	R5PXE126	RZPCE26	R5FLCE9						
RZA62	RZA31	R5PE128	R5PXE128	RZPCE28	R5FLCE10						
RZA62	RZA31	R5PE1210	-	RZPCE210	R5FLCE8 (x2)						
RZA62	RZA31	R5PE1212	-	RZPCE212	R5FLCE9 (x2)						
RZA62	RZA31	R5PE146	-	RZPCE146	R5FLCE9						
RZA62	RZA31	R5PE148	-	RZPCE148	R5FLCE10						
RZA62	RZA31	R5PE1410	-	RZPCE410	R5FLCE8 (x2)						
RZA62	RZA31	R5PE64	-	RZPCE64	R5FLCE8						
RZA62	RZA31	R5PE66	R5PXE66	RZPCE66	R5FLCE9						
RZA62	RZA31	R5PE86	R5PXE86	RZPCE86	R5FLCE9						
RZA62	RZA31	R5PE88	-	RZPCE88	R5FLCE10						
RZA62	RZA31	R5PE106	-	RZPCE16	R5FLCE9						
RZA62	RZA31	R5PE108	R5PXE108	RZPCE18	R5FLCE10						
RZA62	RZA31	R5PE126	R5PXE126	RZPCE26	R5FLCE9						
RZA62	RZA31	R5PE128	-	RZPCE28	R5FLCE10						

CDE

CASSE DI DERIVAZIONE SERIE CDE CDE JUNCTION BOXES SERIES

DIMENSIONI
DIMENSIONS

CASSA CON COPERCHIO AVVITATO JUNCTION BOXES WITH SCREWED COVER	CASSA CON COPERCHIO INCERNIERATO BOX WITH HINGED LID	CASSA CON FLANGE BOX WITH FLANGES	DIM. UTILI PASSAGGIO CAVI USEFUL DIM. CABLE PASSAGE		PANNELLO DI CABLAGGIO* WIRING PANEL*	DIMENSIONI UTILI USEFUL DIMENSIONS		PROFILO DIN DIN PROFILE	DIMENSIONE GUIDA PROFILE DIMENSIONS	STAFFA FISSAGGIO PARETE WALL MOUNTING BRACKET MAX. 4x100 KG	PANNELLO AVVITATO RICAMBI SCREWED COVER REPLACEMENTS
			L	P		H	L				

R5CDE1180	-	-	-	-	RZCDP11	119	120	RZCDO15	TS 35/7,5	RZA62	R5CPCDE11
R5CDE9180	-	-	-	-	RZCDP91	149	120	RZCDO18	TS 35/7,5	RZA62	R5CPCDE91
R5CDE2980	-	-	-	-	RZCDP29	169	150	RZCDO20	TS 35/7,5	RZA62	R5CPCDE29
R5CDE2280	R5CDE2280C	-	-	-	RZCDP22	169	170	RZCDO20	TS 35/7,5	RZA62	R5CPCDE22
R5CDE3180	-	-	-	-	RZCDP31	269	120	RZCDO30	TS 35/7,5	RZA62	R5CPCDE31
R5CDE3280	R5CDE3280C	-	-	-	RZCDP32	269	170	RZCDO30	TS 35/7,5	RZA62	R5CPCDE32
R5CDE4280	R5CDE4280C	-	-	-	RZCDP42	369	170	RZCDO40	TS 35/7,5	RZA62	R5CPCDE42
R5CDE6280	-	-	-	-	RZCDP62	569	170	RZCDO60	TS 35/15	RZA62	R5CPCDE62
R5CDE8280	-	-	-	-	RZCDP82	769	170	RZCDO80	TS 35/15	RZA62	R5CPCDE82
R5CDE11120	-	-	-	-	RZCDP11	119	120	RZCDO15	TS 35/7,5	RZA62	R5CPCDE11
R5CDE22120	R5CDE22120C	-	-	-	RZCDP22	169	170	RZCDO20	TS 35/7,5	RZA62	R5CPCDE22
R5CDE31120	-	-	-	-	RZCDP31	269	120	RZCDO30	TS 35/7,5	RZA62	R5CPCDE31
R5CDE32120	R5CDE32120C	R5CDE32120F	190x2	60	RZCDP32	269	170	RZCDO30	TS 35/7,5	RZA62	R5CPCDE32
R5CDE33120	R5CDE33120C	R5CDE33120F	190x4	60	RZCDP33	269	270	RZCDO30	TS 35/7,5	RZA62	R5CPCDE33
R5CDE42120	R5CDE42120C	R5CDE42120F	190x2	60	RZCDP42	369	170	RZCDO40	TS 35/7,5	RZA62	R5CPCDE42
R5CDE43120	R5CDE43120C	R5CDE43120F	190x4	60	RZCDP43	369	270	RZCDO40	TS 35/7,5	RZA62	R5CPCDE43
R5CDE44120	-	R5CDE44120F	190x4	60	RZCDP44	369	370	RZCDO40	TS 35/7,5	RZA62	R5CPCDE44
R5CDE52120	R5CDE52120C	R5CDE52120F	190x4	60	RZCDP52	469	170	RZCDO50	TS 35/7,5	RZA62	R5CPCDE52
R5CDE53120	-	R5CDE53120F	190x6	60	RZCDP53	469	270	RZCDO50	TS 35/7,5	RZA62	R5CPCDE53
R5CDE62120	-	R5CDE62120F	190x4	60	RZCDP62	569	170	RZCDO60	TS 35/15	RZA62	R5CPCDE62
R5CDE63120	-	R5CDE63120F	190x6	60	RZCDP63	569	270	RZCDO60	TS 35/15	RZA62	R5CPCDE63
R5CDE64120	-	R5CDE64120F	190x6	60	RZCDP64	569	370	RZCDO60	TS 35/15	RZA62	R5CPCDE64
R5CDE82120	-	R5CDE82120F	190x6	60	RZCDP82	769	170	RZCDO80	TS 35/15	RZA62	R5CPCDE82
R5CDE84120	-	R5CDE84120F	190x8	60	RZCDP84	769	370	RZCDO80	TS 35/15	RZA62	R5CPCDE84

*NON INCLUSO
*NOT INCLUDED



DKC Europe Srl - Div. RamBlock
Via Libertà, 207 - 28043 Bellinzago Novarese (No) - Italy
ph. +39 0321 989898 - e-mail: info@dkceurope.eu
www.dkceurope.com